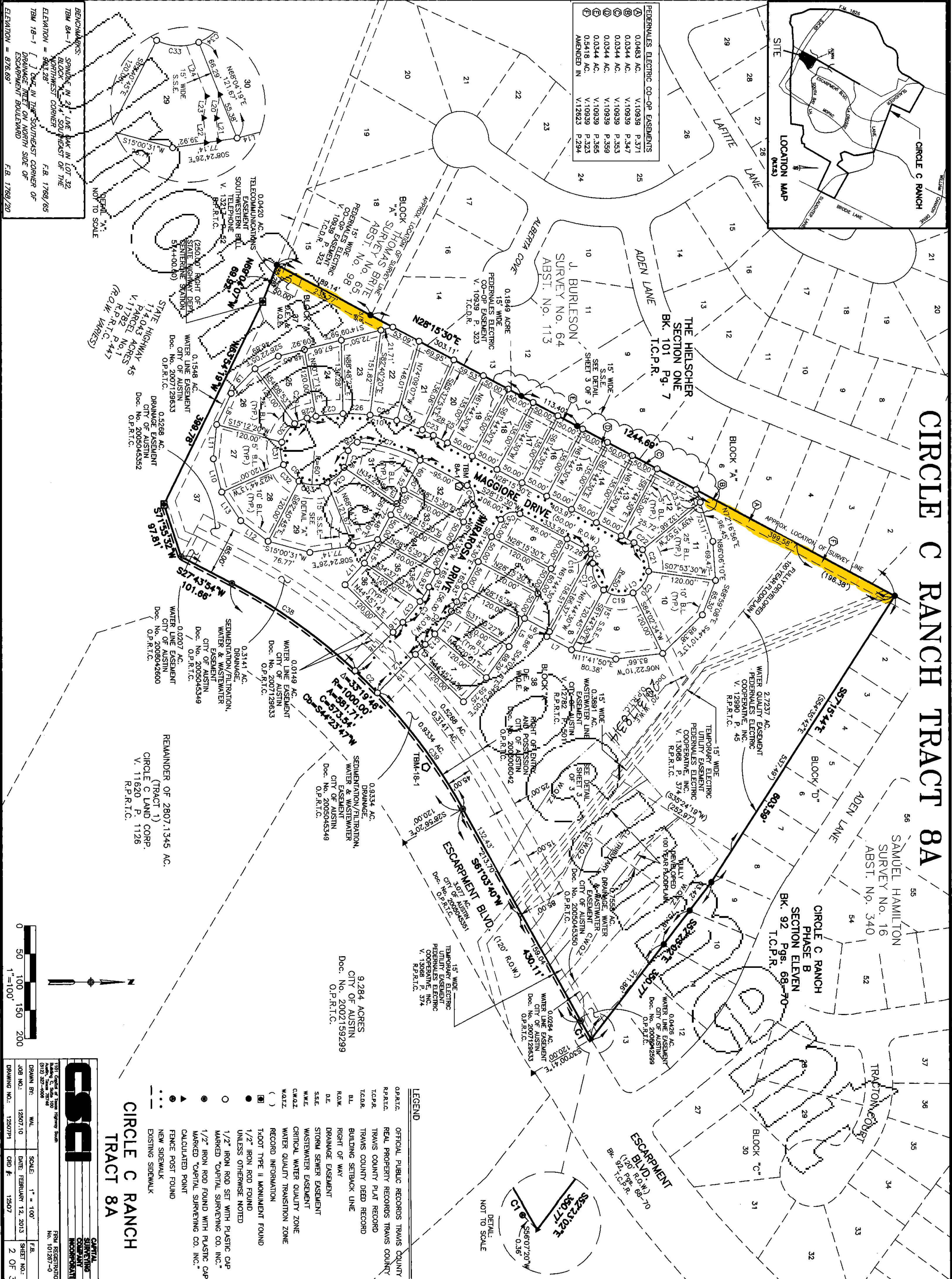
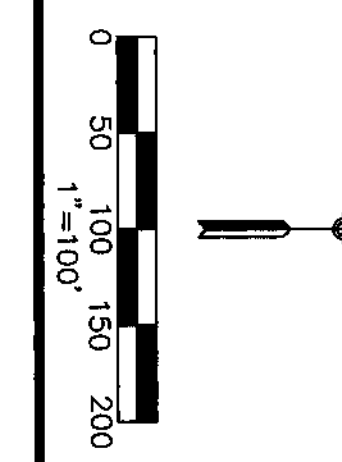


CIRCLE C RANCH TRACT 8A

PERMITS/AS ELEC CO-OP EASEMENTS	P.371	P.347	P.353	P.359	P.366	P.323	P.294
0.0483 AC.	V.10939	V.10939	V.10939	V.10939	V.10939	V.10939	V.12623
0.0344 AC.	V.10939	V.10939	V.10939	V.10939	V.10939	V.10939	V.10939
0.0344 AC.	V.10939	V.10939	V.10939	V.10939	V.10939	V.10939	V.10939
0.0344 AC.	V.10939	V.10939	V.10939	V.10939	V.10939	V.10939	V.10939
0.5418 AC.	V.10939	V.10939	V.10939	V.10939	V.10939	V.10939	V.10939
AMENDED IN	V.12623	V.12623	V.12623	V.12623	V.12623	V.12623	V.12623



BENCHMARKS:
 SPINDLE IN 2" LINE MARK IN LOT 32
 BLOCK 22, 1/4" SOUTHWEST OF THE
 NORTHWEST CORNER
 ELEVATION = 963.28'
 F.B. 1768/65
 TBM 18-1 [] ON THE SOUTHWEST CORNER OF
 ESCARPMENT BOULEVARD
 ELEVATION = 876.69'
 F.B. 1768/20



DATE: FEBRUARY 12, 2013	SCALE: 1" = 100'	F.B. NO.:
DRAWN BY: 1250710	DATE: FEBRUARY 12, 2013	SHEET NO.:
DRAWING NO.: 125071	CRD #: 12507	2 OF 3

CIRCLE C RANCH TRACT 8A

- LEGEND**
- OFFICIAL PUBLIC RECORDS TRAVIS COUNTY
 - REAL PROPERTY RECORDS TRAVIS COUNTY
 - TRAVIS COUNTY DEED RECORD
 - TRAVIS COUNTY PLAT RECORD
 - BUILDING SETBACK LINE
 - RIGHT OF WAY
 - STORM SEWER EASEMENT
 - WASTEWATER EASEMENT
 - CRITICAL WATER QUALITY ZONE
 - WATER QUALITY TRANSITION ZONE
 - RECORD INFORMATION
 - TADOT TYPE II MONUMENT FOUND
 - 1/2" IRON ROD FOUND
 - UNLESS OTHERWISE NOTED
 - 1/2" IRON ROD SET WITH PLASTIC CAP
 - MARKED "CAPITAL SURVEYING CO. INC."
 - MARKED "CAPITAL SURVEYING CO. INC."
 - CALCULATED POINT
 - FENCE POST FOUND
 - NEW SIDEWALK
 - EXISTING SIDEWALK